



Services at Falls of Sound:

- Hearing assessments
- Hearing aids & repairs
- Counselling related to hearing impairment and tinnitus
- Noise plugs
- Swimming plugs
- Musician plugs
- Assistive listening devices

Trading hours:

Mon-Thurs

9:00am-5:30 pm

Friday: 9:00am-4:30 pm

by appointment only

Thursdays after

5.30 pm and

Saturday

Suite 21, Level 5,

Office Tower

Indooroopilly Shopping Centre

318 Moggill Road

Indooroopilly

Ph: 3378 5999

Email:

info@fallsosound.com.au

www.fallsosound.com.au

Dear readers,

Thank you all for your great support and for mentioning our services to your friends and family!

During the cold winter months, we are focusing on hearing awareness in the community by organizing presentations, free hearing screening and OPEN DAYS. Hearing aid manufacturers are bringing out great technology that can be tried during these Open Days. Not only the technology but design and color casing of hearing aids is being redesigned! As the choice of hearing aids is becoming so flexible, we would like to bring attention to the selection of hearing aids. This selection is based on style of the hearing aid (sizes..) and type of hearing aid (technology). And every level of technology is available in all sizes so we are definitely able to meet everyone's needs!

Katia Peeters

Itchy ears

There are a number of reasons why the inside of your ears may be feeling itchy - and, quite frankly, may be driving you round the bend. This is usually due to a disturbance in the skin of the external auditory canal (see figure aside). Here we will look at causes and treatment of itchy ears.

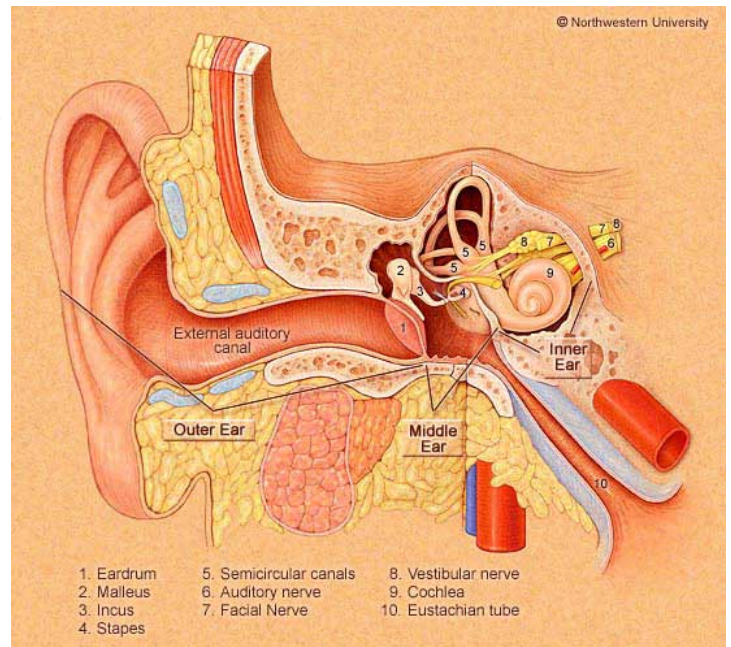
Wax is a common culprit. In itself it doesn't usually cause itching because wax is the normal product of the ear's cleaning mechanism. However, if you're someone who tries to clean his ears with cotton wool buds then this can cause itching because you irritate the sensitive lining of the ear canal.

Although our mothers would diligently try and clean the wax from our ears, experts now believe this should not be done since so much damage can be caused. In fact, it's true that the smallest thing you should put in your ear is your elbow. Wax will come out quite happily by itself. If you try to help it out all you'll do is push the wax further inside and make it harder for it to get out. If the wax is too hard, you'll need "ear wax drops" to soften the wax.

Eczema can affect the ear canal and this can be very itchy. An allergic reaction to chlorine or something you may have put in the bath or have been washing with causes similar symptoms. If this is the case you may need some ear drops to treat the problem.

A soothing and refreshing ear lotion can give you some relief like "Eargene" . If this doesn't solve the problem then it's worth getting your doctor to take a look.

Occasionally as a result of this sort of problem (and poking things in the ear in an attempt to get some relief) an infection develops which will need additional treatment. You'll know if this is the case because your ear will probably feel very painful too.



What are the different styles of hearing aids?

There are several types of hearing aids. Each type offers different advantages, depending on its design, levels of amplification, and size. There are four basic styles of hearing aids for people with sensory-neural hearing loss:



Very small and invisible hearing aids fit into the ear canal and are available in two sizes. The **Mini Canal hearing aid** is customized to fit the size and shape of the ear canal and a **Completely-in-Canal (CIC)** hearing aid is largely concealed in the ear canal and is used for mild to moderately hearing loss. Because of their small size, canal aids may be difficult for the user to adjust and remove. Canal aids can also be damaged by earwax and ear drainage. They are not typically recommended for children.



In-the-Ear (ITE) and In-the-Canal (ITC) hearing aids fit partly in the outer ear, partly in the canal and are used for mild to severe hearing loss. ITE /ITC aids can be damaged by earwax and ear drainage, and their small size can cause adjustment problems and feedback. They are not usually worn by children because the casings need to be replaced as the ear grows.



Behind-the-Ear (BTE) hearing aids are worn behind the ear and are connected to a acrylic earmould that fits inside the outer ear. The components are held in a case behind the ear. Sound travels through the earmould into the ear. BTE aids are used by people of all ages for mild to profound hearing loss.

Over the last few years, the **Open Fitting Hearing** aid was introduced. Usually quite discreet, these are small Behind-the-ear type devices, with a much finer clear tube that runs down into the ear canal. Inside the ear canal, there is a small soft silicone dome or a molded, highly vented acrylic tip that holds the tube in place. These devices are designed to reduce the "occlusion effect", which is the amplification of your own voice when your ears are plugged up (try sticking your fingers in your ears and talking). Open-fit devices are very beneficial for High-Frequency hearing losses.



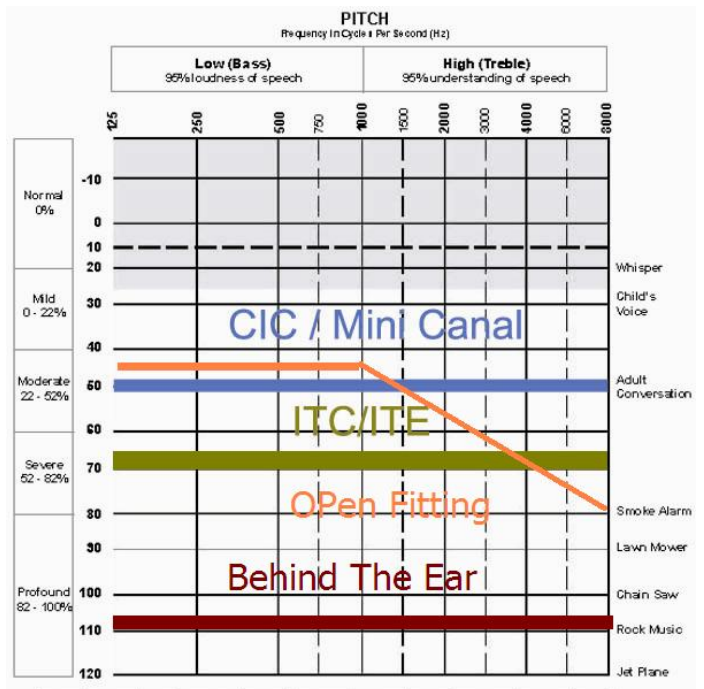
Based on the degree and shape of the hearing loss as well as manual dexterity test and activity level of the person, a style of hearing aid can be chosen to suit everyone.

On fig 1. The levels of hearing loss appropriate for the style of hearing is demonstrated. A small Completely In the Canal hearing aid (CIC) would be recommended for moderate losses up to 50dB. While a Behind The Ear hearing aid can be chosen from mild to profound hearing loss.

Next what type of hearing aid ?

In the past, we classified hearing aids between analogue and digital, today all our hearing aids are digital and are very flexible in fine tuning. So whatever the level of hearing loss, a certain type of hearing aid can be fitted from basic to premium!

More important, the hearing needs determine the type of hearing aid to be chosen? Next time we will discuss the different options when choosing the type of hearing aid based on star rating.



What is it like "wearing hearing aids" ? Falls of Sound OPEN DAY

During an Open day, clients can trial the latest technology in hearing aids.

Date: 13th of July 2005.

